



SELF INJURY SUPPORT LTD

Reg.country: United Kingdom

Year Founded: 1986

Total Income to Date: ~£102,610

Total Spending to Date: ~£129,072

United Kingdom

Help Us Continue to Run the ONLY UK-wide Self Harm Support Service

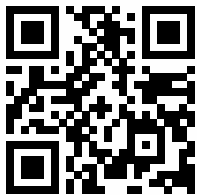
For over 30 years, we've offered support to thousands of women and girls in the depths of despair, but now we need to ask for help ourselves. For over 30 years, we've offered support to thousands of women and girls in the depths of despair, but now we need to ask for help ourselves ...

Timeline: 1 Year

Project Budget: £93,927

Direct Commitment Ratio: 86.51%

Project to Organisation Ratio: 91.54%

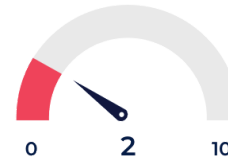


Scan the QR code to learn more

In-country Needs Intensity Score



Global Needs Intensity Score



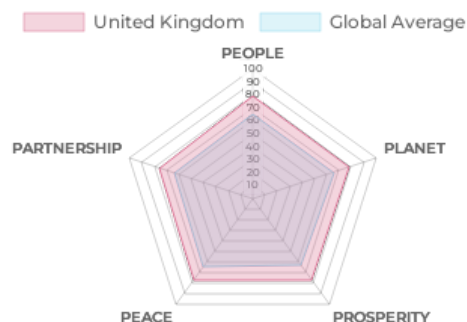
Topic and Activity Grid

	Mental health	Children & Youth	Women Empowerment	Education & Training	Wellbeing
Advocacy	█	█	█	□	█
Catalysing	█	█	□	█	□
Convening	█	█	█	█	█
Goods Provision	□	█	□	█	□
Infrastructure Provision	█	█	□	█	█
Services Provision	█	█	█	█	█
Research & Development	█	█	█	□	█
Raising Awareness	█	█	□	█	□
Training	█	█	█	█	█

Sustainable Development Goals Profile:



Five Pillars:



People: Social Impact

No of lives impacted	2,000
Gender	Female
Age	12-17, 18-25, 26-40, 41-60, 60+
Employment Status	-
Accessibility	Disabled, Non-Disabled
Location	Urban, Suburban, Rural, Remote

Planet: Environmental Impact

Land	-
Water	-
Air	-
Ecosystems	-
Species	Humans
Type of Work	-

Project Outcome Indicators

Short term	<p>— Metric: Number of People Contacting the Services for Support Objective: An increase of 20%;</p> <p>— Metric: Number of People Using Online Tools Objective: At least 200 people will use the tools;</p>
Long term	<p>— Metric: People receiving support will reduce their self-harm Objective: 60% of people will reduce their use of self harm;</p> <p>— Metric: People receiving support will have a better understandi... Objective: 75% of people will report learning about at least one ide...</p>

Project Intervention Type Community change

Partnering Organisations **Company** **Website**