

# Guy's And St Thomas' Charity

Reg.country: United Kingdom

Year Founded: 2015

Total Income to Date: ~£24,056,000

Total Spending to Date: ~£35,613,000

United Kingdom

## Mental wellbeing of nurses and doctors caring for COVID-19 patients

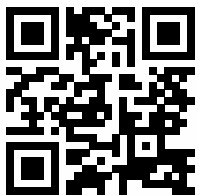
As one of a very small number of designated high consequence infectious disease treatment centres in the epicentre of the UK's coronavirus o As one of a very small number of designated high consequence infectious disease treatment centres in the epicentre of the UK's coronavirus o ...

Timeline: 1 Year

Project Budget: £141,750

Direct Commitment Ratio: 85.89%

Project to Organisation Ratio: 0.59%

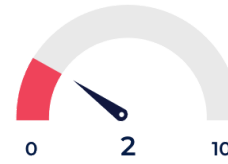


Scan the QR code to learn more

In-country Needs Intensity Score



Global Needs Intensity Score



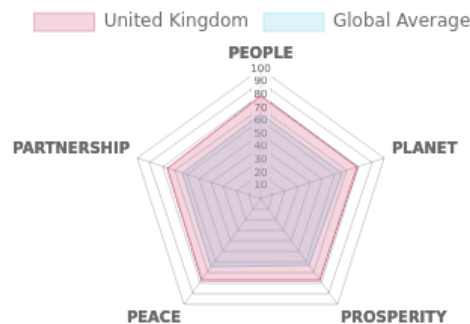
### Topic and Activity Grid

	Health & Medical	Mental health
Advocacy	<input type="text"/>	<input type="text"/>
Catalysing	<input type="text"/>	<input type="text"/>
Convening	<input type="text"/>	<input type="text"/>
Goods Provision	<input type="text"/>	<input type="text"/>
Infrastructure Provision	<input type="text"/>	<input type="text"/>
Services Provision	<input checked="" type="text"/>	<input checked="" type="text"/>
Research & Development	<input type="text"/>	<input type="text"/>
Raising Awareness	<input type="text"/>	<input type="text"/>
Training	<input type="text"/>	<input type="text"/>

### Sustainable Development Goals Profile:



### Five Pillars:



## People: Social Impact

No of lives impacted	3,000
Gender	Female, Male
Age	0-3, 4-11, 12-17, 18-25, 26-40, 41-60, 60+
Employment Status	Student, Employed, Self-employed, Unemployed
Accessibility	Disabled, Non-Disabled
Location	Urban, Suburban

## Planet: Environmental Impact

Land	Urban
Water	-
Air	Urban
Ecosystems	-
Species	Humans
Type of Work	Other

## Project Outcome Indicators

Short term	<ul style="list-style-type: none"> <li>— Metric: Health</li> <li>Objective: Support coronavirus patients to recover;</li> <li>— Metric: Mental health wellbeing</li> <li>Objective: Support frontline hospital staff to recover from the me...</li> </ul>
Long term	<ul style="list-style-type: none"> <li>— Metric: Mental health</li> <li>Objective: Support healthcare workers to recover mentally;</li> </ul>

## Project Intervention Type

System change

## Partnering Organisations

Company	Website
King's College London	<a href="https://www.kcl.ac.uk/">https://www.kcl.ac.uk/</a>
Evelina Children's Hospital	<a href="https://www.evelinalondon.nhs.uk/Home.aspx">https://www.evelinalondon.nhs.uk/Home.aspx</a>